

# Economic activity of population in Mazowieckie voivodship in I quarter 2018

29.06.2018

Employment rate increased by 0.5 pp compared to the previous quarter

**57.8%**

Employment rate

In comparison with IV quarter 2017, the number of employed persons increased, while the number of economically inactive persons decreased, which led to the increase in the economic activity rate and the employment rate. The number of unemployed persons shaped at a slightly higher level.

## Economic activity of population aged 15 and more

In the I quarter of 2018, among the total population of Mazowieckie voivodship aged 15 and more, 57.8% represented employed persons, 2.3% – unemployed persons, and 39.9 – economically inactive persons. This means that less than half of the population aged 15 and more (42.2%) did not work. Both in urban and rural areas this structure looked similar. Significant differences were visible in the structure of men and women – 34.7% of men and 48.8% of women were unemployed.

Figure 1. Structure of population aged 15 and more by sex in I quarter 2018

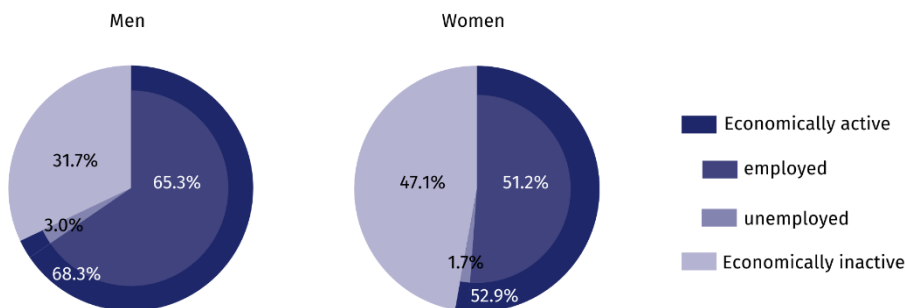
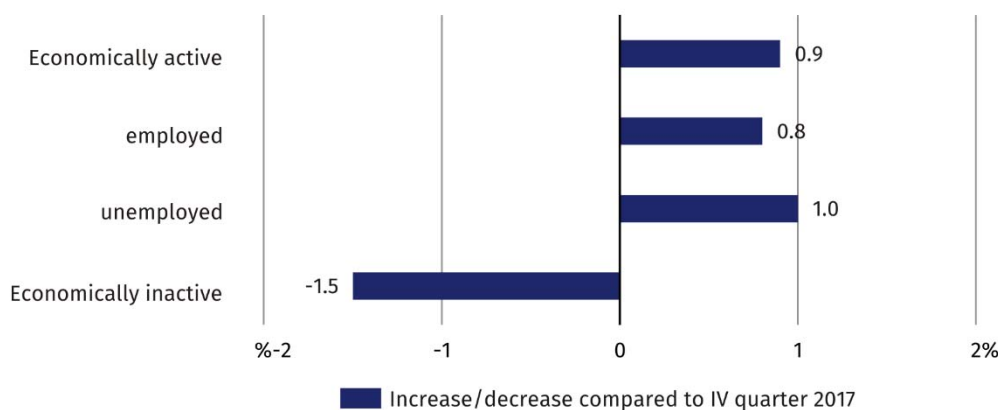


Figure 2. Changes in I quarter 2018

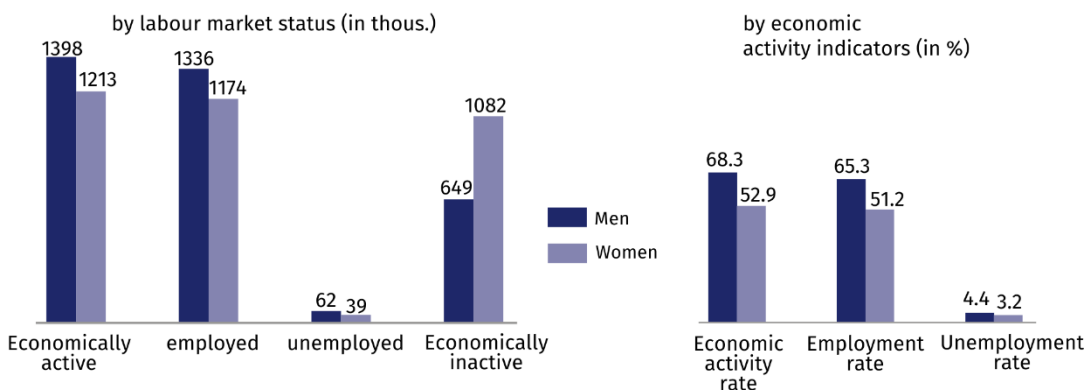


The number of economically inactive persons decreased by 1.5%

In comparison with IV quarter 2017, the number of economically active population increased (by 0.9%), there was an increase in the number of employed persons (by 0.8%), increase in the number of unemployed persons (by 1.0%) and a decrease in the number of economically inactive population (by 1.5%). There was a decrease in the ratio of working population to non-working population. In I quarter 2018, there were 730 unemployed and economically inactive persons per 1000 employed persons, while in IV quarter 2017 — 746.

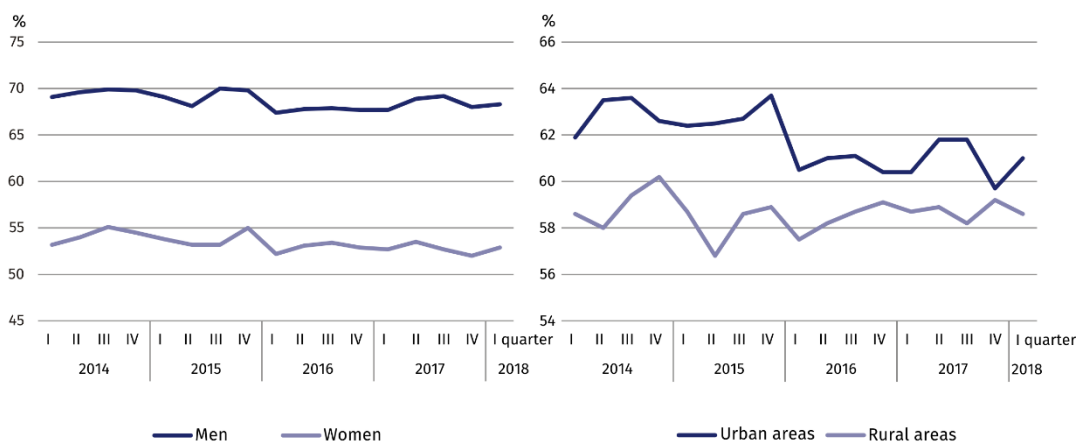
There were 730 unemployed and economically inactive persons per 1000 employed persons

**Figure 3. Economic activity of population in I quarter 2018**



The economic activity rate amounted to 60.1% and increased compared to the previous quarter by 0.6 pp. There was an increase in the level of economic activity, both in male (by 0.3 pp) and female population (by 0.9 pp). The economic activity rate increased in urban areas (by 1.3 pp), and in rural areas decreased (by 0.6 pp). Men and urban residents were more active than women and rural residents.

**Figure 4. Economic activity rate by sex and place of residence**



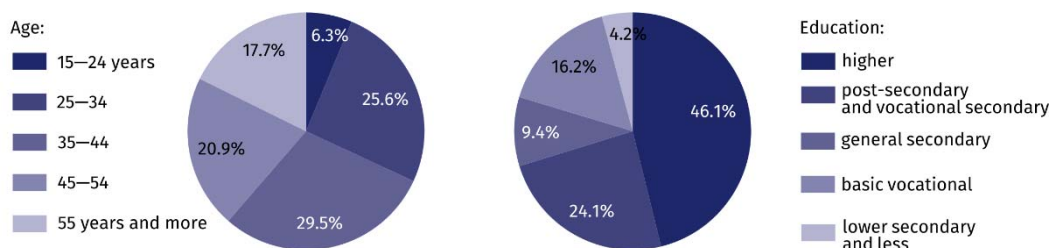
The highest value of the indicator in terms of age was recorded in the age group 25–34 years, which was 89.2%, and the lowest among persons aged 55 and more — 28.7%. For working age population this indicator amounted to 80.7%.

### Employed persons

In I quarter 2018, in Mazowieckie voivodship, the population of employed persons counted 2510 thous. persons, and employment rate was estimated at 57.8%.

In comparison with IV quarter 2017, the number of employed persons increased by 0.8%. An increase was recorded in female population (by 2.4%), and among male population a decrease (by 0.4%). The number of employed persons increased among urban residents (by 2.1%), and decreased among rural residents (by 1.4%).

**Figure 5. Structure of employed persons by age and education in I quarter 2018**



In I quarter 2018, the highest employment rate was noted among persons aged 35–44 (86.7%), and the lowest among persons aged 55 and more (27.7%).

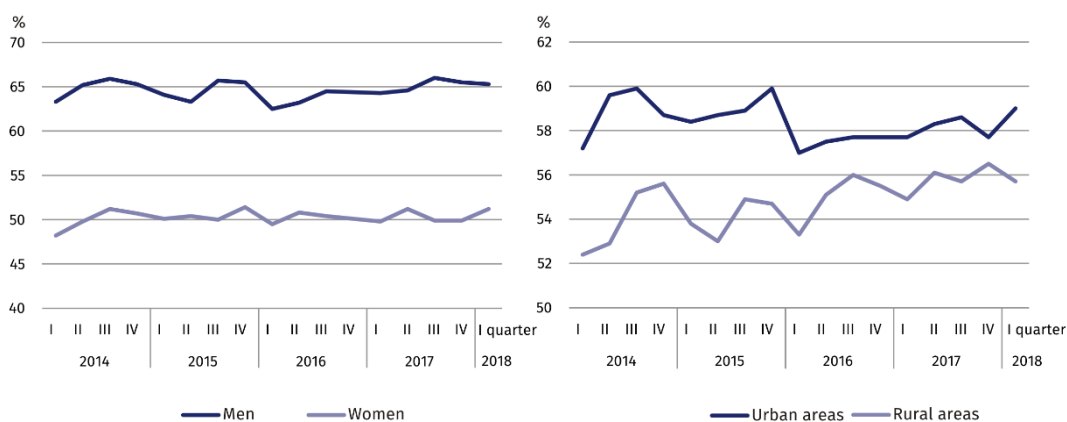
The highest increase in employment rate was noted among persons aged 15–24 (by 2,5 pp), and the highest decrease among persons aged 25–34 and 35–44 (by 0.2 pp each).

For working age population, the employment rate was estimated at 77.5% (an increase by 0.8 pp compared to IV quarter 2017).

Among employed persons by educational level, the highest employment rate recorded persons with higher education –79.6%, and the lowest among persons with lower secondary and less education – 15.4%.

The largest increase in the employment rate recorded persons with general secondary education (by 2.8 pp), and a decrease only among population with lower secondary and less education (by 0.8 pp).

**Figure 6. Employment rate by sex and place of residence**

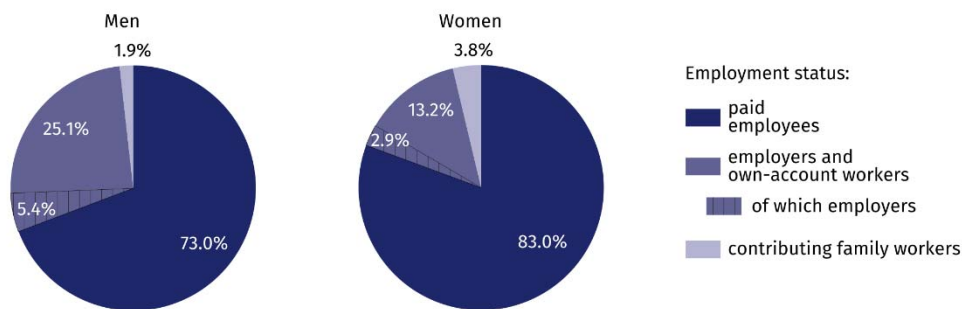


In I quarter 2018, as paid employees worked 1949 thous. persons (i.e. 77,6% of the total employed), and their number increased by 1.0% compared to IV quarter of 2017. The decrease was among contributing family workers (from 74 thous. to 70 thous.), and among employers and own account workers an increase (from 485 thous. to 491 thous.).

The vast majority of employed persons supported the private sector (75.7% of the total employed). Of these, the majority (57.9%) were men. The situation was different among paid employees in private sector, in which among 611 thous. employed persons predominated women (61.0%). 76.0% of paid employees worked for an indefinite period, by 0.4 pp less than in IV quarter 2017.

76% of total employed persons worked in private sector

**Figure 7. Structure of employed persons by employment status in I quarter 2018**

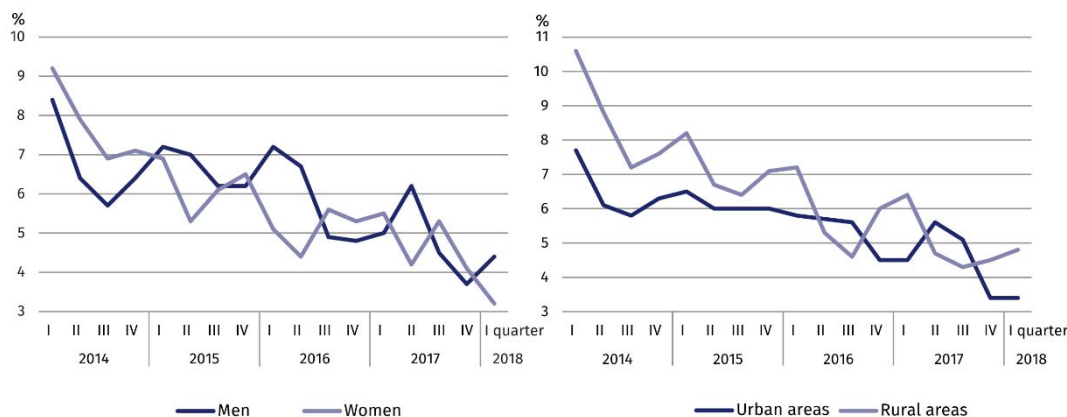


25% of men and 13% of women worked as employers and own-account workers

**Unemployed**

In I quarter 2018, the population of unemployed persons in Mazowieckie voivodship amounted to 101 thous. persons and increased by 1.0% compared to IV quarter 2017.

**Figure 8. Unemployment rate by sex and place of residence**



Compared to the previous quarter, the number of unemployed women decreased by 20.4%, and the number of men increased by 21.6%. In terms of place of residence – an increase was recorded among rural residents by 4.8%, and among urban residents there were no changes.

The total unemployment rate in the voivodship amounted to 3.9%. In urban areas it was 3.4%, i.e. by 1.4 pp lower than in rural areas. For working age population the unemployment rate was 4.0%.

In comparison with IV quarter 2017, the unemployment rate increased among rural residents (by 0.3 pp), and among urban residents it did not change. A decrease in the unemployment rate was recorded in female population (by 0.9 pp), and among men an increase (by 0.7 pp).

The lowest unemployment rate was noted among persons with higher education (1.7%), and the highest among persons with lower secondary and less education (11.7%).

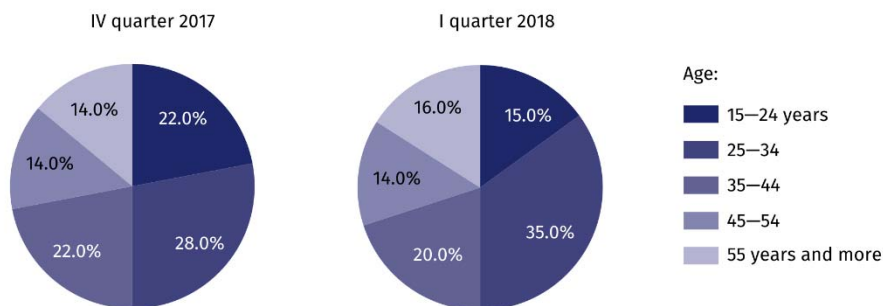
The highest increase in the unemployment rate was noted among persons with lower secondary and less education (by 1.2 pp), and the largest decrease among persons with post-secondary and vocational secondary education (by 0.6 pp).

The lowest unemployment rate was among persons aged 35–44 and 45–54 years (2.6% both), and the highest among persons aged 15–24 years (8.7%).

The highest increase in the unemployment rate was noted in the group of persons aged 25–34 years (by 1.1 pp), and the largest decrease among persons aged 15–24 years (by 4.4 pp).

A decrease in the number of unemployed women by 20%, and among men an increase by 22%

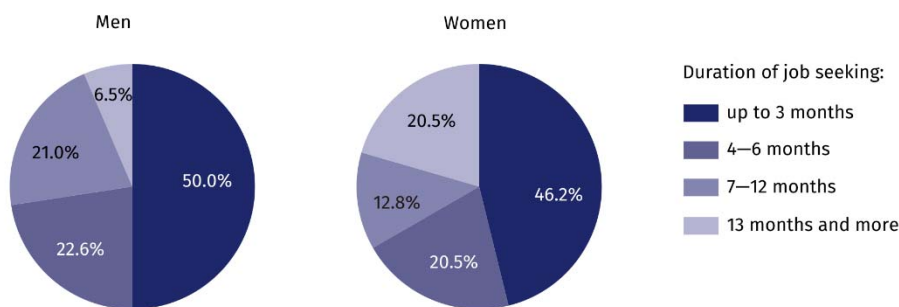
**Figure 9. Structure of unemployed persons by age**



An average time of job seeking by unemployed persons amounted to 7.4 months. Men and urban residents looked for a job shorter than women and rural residents. Men looked for a job for 6.5 months on average (by 2.1 months shorter than women), and urban residents for 7.2 months (by 0.4 months shorter than rural residents).

Men and urban residents looked for a job shorter than women and rural residents

**Figure 10. Structure of unemployed persons by duration of job seeking in I quarter 2018**



The population of long-term unemployed persons (13 months and more) amounted to 12 thous., which represented 11.9% of the total unemployed. Long-term unemployment was more frequent among women than among men (20.5% compared to 6.5%) and more frequent among rural than among urban residents (13.6% compared to 10.5%).

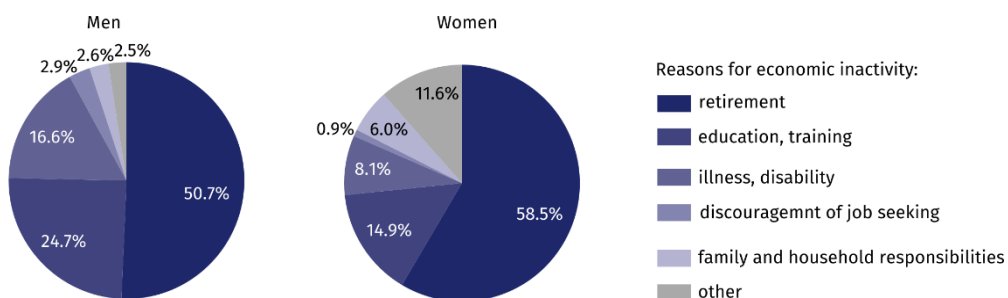
Long-term unemployment was more frequent among women than among men

**Economically inactive population**

In I quarter 2018, in Mazowieckie voivodship, 1731 thous. persons remained economically inactive, which accounted for 39.9% of total population aged 15 and more (in rural areas – 41.4%, in urban areas – 39.0%). Still, in this population the majority were women – 62.5%. Among economically inactive persons, as in previous periods, predominated persons with lower secondary and less education – 32.4%. Working age population made up 34.3% of total economically inactive persons.

Among economically inactive persons, the majority were women – 63%

**Figure 11. Structure of economically inactive men and women by causes of economic inactivity in I quarter of 2018**



In relation to IV quarter 2017, the population of economically inactive persons decreased by 1.5% (in female population by 1.8%, and in male population by 1.2%). Taking into account a place of residence, a decrease in the number of economically inactive persons was noted among urban residents (by 3.3%), and among rural residents an increase (by 1.4%).

Out of total economically inactive persons, 55.6% accounted for person who did not take up work because of being retired. Other reasons for economic inactivity were: education and training – 18.5%, illness or disability – 11.3%, family and household responsibilities – 4.7%. The population of persons discouraged by inefficiency of job seeking amounted to 29 thous., i.e. 1.7% of total economically inactive persons.

Table 1. **Economic activity of population aged 15 and more by selected indicators**

SPECIFICATION	IV quarter 2017	I quarter 2018	
	in %		increase/decrease in pp compared to the previous period
<b>ECONOMIC ACTIVITY RATE</b>			
<b>TOTAL</b>	<b>59.5</b>	<b>60.1</b>	<b>0.6</b>
men	68.0	68.3	0.3
women	52.0	52.9	0.9
Urban areas	59.7	61.0	1.3
Rural areas	59.2	58.6	−0.6
<b>EMPLOYMENT RATE</b>			
<b>TOTAL</b>	<b>57.3</b>	<b>57.8</b>	<b>0.5</b>
men	65.5	65.3	−0.2
women	49.9	51.2	1.3
Urban areas	57.7	59.0	1.3
Rural areas	56.5	55.7	−0.8
<b>UENEMPLOYMENT RATE</b>			
<b>TOTAL</b>	<b>3.9</b>	<b>3.9</b>	<b>—</b>
men	3.7	4.4	0.7
women	4.1	3.2	−0.9
Urban areas	3.4	3.4	—
Rural areas	4.5	4.8	0.3

Table 2. **Economic activity of population aged 15 years and more by status on the labour market**

SPECIFICATION	IV quarter 2017	I quarter 2018	
	in thousand		IV quarter=100
<b>EMPLOYED PERSONS</b>			
<b>TOTAL</b>	<b>2 489</b>	<b>2 510</b>	<b>100.8</b>
men	1 342	1 336	99.6
women	1 147	1 174	102.4
Urban areas	1 606	1 640	102.1
Rural areas	882	870	98.6
<b>UNEMPLOYED PERSONS</b>			
<b>TOTAL</b>	<b>100</b>	<b>101</b>	<b>101.0</b>
men	51	62	121.6
women	49	39	79.6
Urban areas	57	57	100.0
Rural areas	42	44	104.8
<b>ECONOMICALLY INACTIVE PERSONS</b>			
<b>TOTAL</b>	<b>1 758</b>	<b>1 731</b>	<b>98.5</b>
men	657	649	98.8
women	1 102	1 082	98.2
Urban areas	1 121	1 084	96.7
Rural areas	638	647	101.4

Table 3. **Employment rate and unemployment rate by age**

SPECIFICATION	IV quarter 2017	I quarter 2018	
	in %		increase/decrease in pp compared to the previous period
<b>EMPLOYMENT RATE</b>			
<b>TOTAL</b>	<b>57.3</b>	<b>57.8</b>	<b>0.5</b>
15–24 years	28.9	31.4	2.5
25–34	84.8	84.6	–0.2
35–44	86.9	86.7	–0.2
45–54	82.9	85.1	2.2
55 years and more	27.6	27.7	0.1

Table 3. **Employment rate and unemployment rate by age (cont.)**

SPECIFICATION	IV quarter 2017	I quarter 2018	
	in %		increase/decrease in pp compared to the previous period
<b>UNEMPLOYMENT RATE</b>			
<b>TOTAL</b>	<b>3.9</b>	<b>3.9</b>	<b>—</b>
15–24 years	13.1	8.7	–4.4
25–34	4.1	5.2	1.1
35–44	2.9	2.6	–0.3
45–54	2.7	2.6	–0.1
55 lat i więcej	3.1	3.5	0.4

Table 4. **Employment rate and unemployment rate by level of education**

SPECIFICATION	IV quarter 2017	I quarter 2018	
	in %		increase/decrease in pp compared to the previous period
<b>EMPLOYMENT RATE</b>			
<b>TOTAL</b>	<b>57.3</b>	<b>57.8</b>	<b>0.5</b>
Higher	79.3	79.6	0.3
Post-secondary and vocational secondary	61.1	61.9	0.8
General secondary	48.2	51.0	2.8
Basic vocational	52.2	53.0	0.8
Lower secondary, primary and incomplete primary	16.2	15.4	–0.8
<b>UNEMPLOYMENT RATE</b>			
<b>TOTAL</b>	<b>3.9</b>	<b>3.9</b>	<b>—</b>
Higher	1.8	1.7	–0.1
Post-secondary and vocational secondary	4.1	3.5	–0.6
General secondary	6.7	6.7	—
Basic vocational	5.5	6.2	0.7
Lower secondary, primary and incomplete primary	10.5	11.7	1.2



Prepared by:

**Mazovian Centre for Regional Surveys**  
**Statistical Office in Warszawa**  
**Aneta Czyżkowska**  
Tel: 22 464 20 30  
e-mail: [a.czyzkowska@stat.gov.pl](mailto:a.czyzkowska@stat.gov.pl)

Issued by:

**Statistical Information Centre**  
**Marcin Kałuski**  
Tel: 22 464 20 91  
e-mail: [m.kaluski@stat.gov.pl](mailto:m.kaluski@stat.gov.pl)

Translated by:

**Agnieszka Gromek-Żukowska**  
Tel: 22 464 22 42  
e-mail: [a.gromek-zukowska@stat.gov.pl](mailto:a.gromek-zukowska@stat.gov.pl)

#### Press office

tel.: 22 464 20 91

e-mail: [m.kaluski@stat.gov.pl](mailto:m.kaluski@stat.gov.pl)



[warszawa.stat.gov.pl](http://warszawa.stat.gov.pl)



[@Warszawa\\_STAT](https://twitter.com/Warszawa_STAT)

#### Related information

[Economic activity of the Polish population](#)

[Monitoring of the labour market](#)

#### Data available in databases

[Local Data Bank/Labour market](#)

#### Terms used in official statistics

[Economic activity rate of population](#)

[Employment rate](#)

[Unemployment rate](#)

**Evaluate**  
the study

